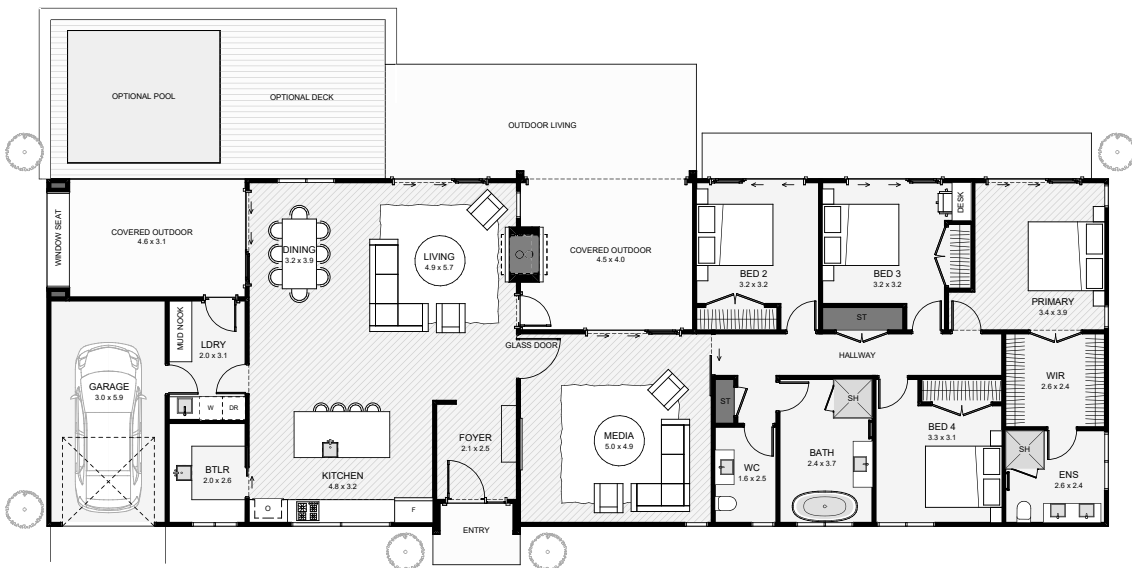




This barn-style home combines rustic appeal with modern living. Clad in weatherboard and vertical board, it features a stone chimney that adds warmth and character. Dual outdoor living areas with back-to-back fireplaces offer cosy spaces year-round, while the large kitchen with a butler's pantry makes entertaining effortless. With two living rooms, this design balances connection and relaxation, perfect for every lifestyle.



Floor Area: 217m²

 1  4  2  2  27.7m  9.5m

Contact us:

 021 025 82299

E: andy@whitechurchconstruction.co.nz

www.whitechurchconstruction.co.nz



WHITECHURCH
CONSTRUCTION LIMITED